

Specifications

备注 (Remark)

1. 材料 (MATERIAL)

胶芯: PA6T/PBT+30%G. F UL94V-0, 颜色: 黑色.

Housing: PA6T/PBT+30%G. F UL94V-0, Color: Black

四方针: 黄铜, 镀底30u"MIN, 表面镀金0.8u"MIN

Contact: Brass, 0.8u"MIN GOLD PLATING OVER ALL

30u" MIN NICKEL UNDERPLATING OVER ALL

2. 特性 (characteristics):

额定电流: 3 AMP

额定电压: AC 500V.

温度范围: -40°C to+105°C

Temperature Range: -40°C to+105°C

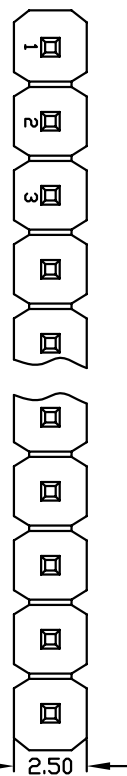
绝缘阻抗: 1000 MΩ MIN.

耐电压: AC 500V.

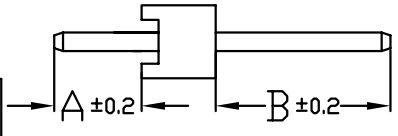
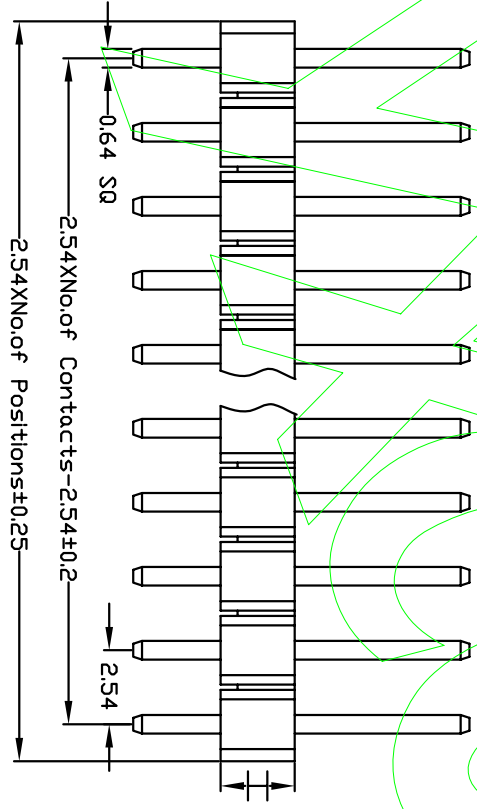
Withstanding Voltage: AC 500V.

温度范围: -40°C to+105°C

Temperature Range: -40°C to+105°C



| HEIGHT OF HOUSING | NO. OF PINS PER ROW | Contact Plating | INSULATOR MATERIAL: | LENGTH OF TERMINAL | PACKING |
|-------------------|---------------------|---------------------------------|---------------------|--------------------|----------------|
| 15:1.5mm | 1-40P | Full of Gold | Semi-gold | A:PE | APPE Bag |
| 17:1.7mm | | A0=0.8u" | A: PBT | B:0.8u" | B: Tape & Reel |
| 20:2.0mm | | A1=1u" | B: PA6T | B1=1u" | C: Tube |
| 25:2.54mm | | A2=1.5u" | C: PA6T | B2=1.5u" | D: Tube+CAP |
| | | A3=2u" | | B3=2u" | E: Tray |
| | | A4=3u" | | B4=3u" | |
| | | A5=5u" | | B5=5u" | |
| | | A6=10u" | | B6=10u" | |
| | | A7=15u" | | B7=15u" | |
| | | A8=20u" | | B8=20u" | |
| | | A9=30u" | | B9=30u" | |
| | | S1=Ordinary Tin Plated | | | |
| | | S2= Matte Tin Plated | | | |
| | | S3= Tin-plated High-temperature | | | |



| Dimension antitheses list | | | |
|---------------------------|-----|-----|------------------|
| ITEM | A | B | H |
| Standard | 3.0 | 6.0 | 1.5 1.7 2.0 2.54 |
| Alternate | | | |



东莞市宇熙精密连接器有限公司
Dongguan Yuxi Electronic Co., Ltd.

Ordering Information

P1XX-11 XX XX X S XXX X 1

| REV | DATE | MODIFICATION DESCRIPTION | CHANGE | APPROVE | OPERATION | | SCALE | | DESIGN | DESIGNER | PART NO. | TITLE: |
|-----|------|--------------------------|--------|---------|-----------|-------|-------|-----|--------|----------|-----------------|-----------------|
| | | | | | UNIT | MM | UNIT | MM | | | | |
| | | | | | X.X | ±0.25 | A4 | 1/1 | 卢小强 | | P1XX-11XXXXXXX1 | 2.54mm 单排针 180度 |
| | | | | | X.XX | ±0.20 | | | | | | |
| | | | | | X.XXX | ±0.10 | | | | | | |
| | | | | | Angle | ±3° | | | | | | |
| | | | | | DIM | TOL | | | | | | |

1 2 3 4 5 6 7 8 9 10